

MAXIMUS 5714

Hardware features

- System On Chip i.MX285 @450MHz;
- RTC;
- Input supply 12/30Vdc;

Memory

- Up to 128MB of RAM DDR2;
- 8Kbyte FRAM;
- uSD Socket (possibility of boot directly from SD);

Software

- Linux Kernel Ver. 2.6.35;
- Real Time Kernel;
- Graphic libraries QT 4.x;

Legenda:

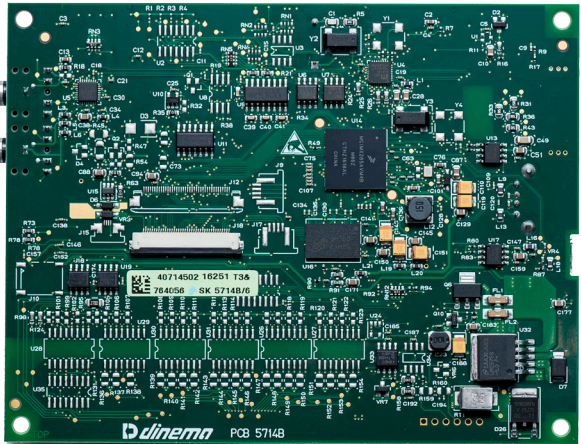
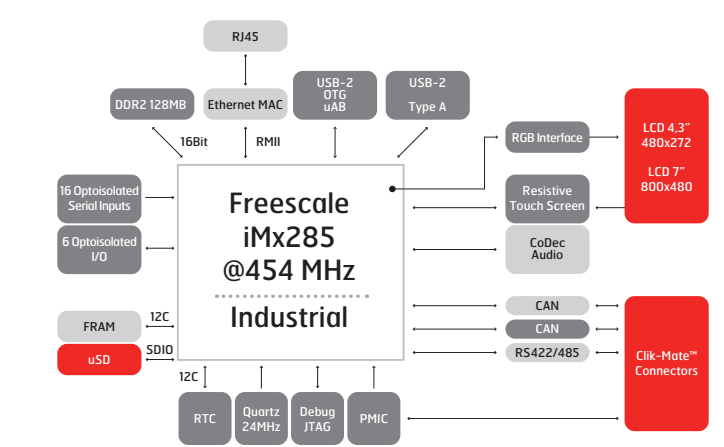
- Default ● Optional ● Connectors

Connectivity and Communication Interface

- Ethernet 10/100Mb;
- OTG uUSB port;
- 2.0 USB port;
- Can-Bus at 1Mbit x 2 lines;
- RS232 DEBUG serial console;
- RS422/485 port;
- Digital signals on a I2C and SPI expansion connectors;
- 16 serial Input;
- 6 I/O optoisolated;

HMI

- Touch screen resistive;
- TFT 4,3", 480x272 - 24bpp;
- TFT 7", 800x480 - 18bpp;
- Codec Audio with Jack output stereo;
- Microphone input;



MAXIMUS 5750

Hardware features

- System On Chip iMX6 up to 4 Core A9 @800MHz;
- RTC;
- Power supply 24Vdc;

Memory

- Up to 2GB of RAM DDR3 with bus 64 bit;
- Up to 4GB Flash eMMC of industrial range on 8bit bus;
- 64Kbyte FRAM;
- uSD Socket (possibility of boot directly from SD);

Software

- Linux Kernel Ver. 3.0.35;
- Real Time Kernel;
- Graphic Libraries QT 4.x/5.x;

Legenda:

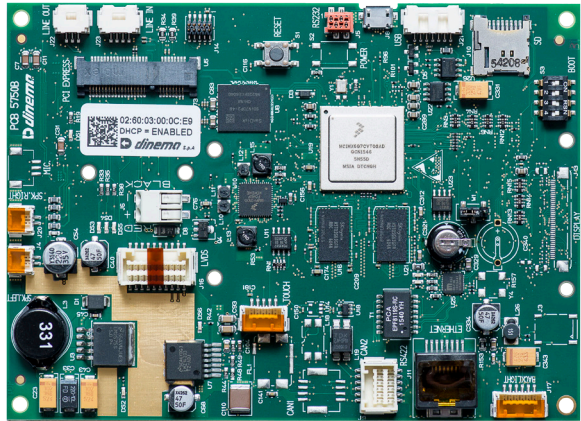
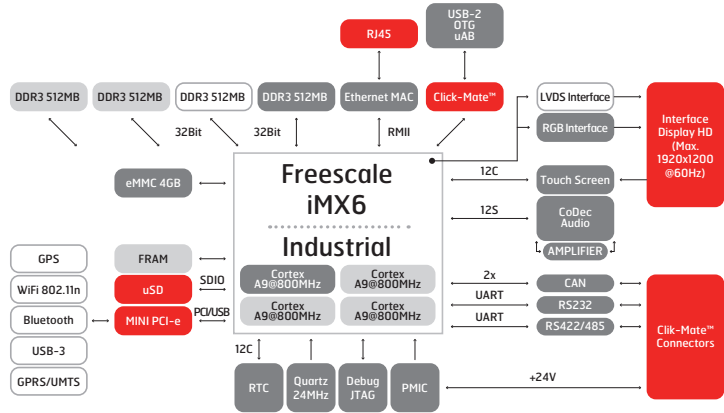
- Default ● Optional ● Connectors

Connectivity and Communication Interface

- Ethernet 10/100Mb;
- OTG uUSB port;
- 2.0 USB port;
- Dual Can-Bus a 1Mbit;
- Serial Debug RS232;
- RS422;
- Digital expoansion for I2C e SPI;
- Mini PCMCi express expansion slot (WiFi/GPRS);

HMI

- TFT 5,6", 800x480 e 24bpp – capacitive touch;
- TFT 7", 800x480 e 24bpp – resistive touch;
- Resistive or capacitive touch screen controller;
- LVDS for capacitive Displays up to 21" (FullHD);
- Codec Audio with Jack stereo output;
- Microphone input;



MAXIMUS 58xx

Hardware features

- System On Chip iMX6 up to 4 Core A9 @800MHz;
- RTC;
- Power supply 12/30Vdc;

Memory

- Up to 2GB of RAM DDR3 with 64 bit bus;
- Up to 128GB Flash eMMC of industrial range with 8bit bus;
- 8Kbyte FRAM;
- uSD Socket, (possibility of boot directly from SD);

Software

- Linux Kernel Ver. 3.10.17;
- Real Time Kernel;
- Graphic libraries QT 4.x/5.x;

Legenda:

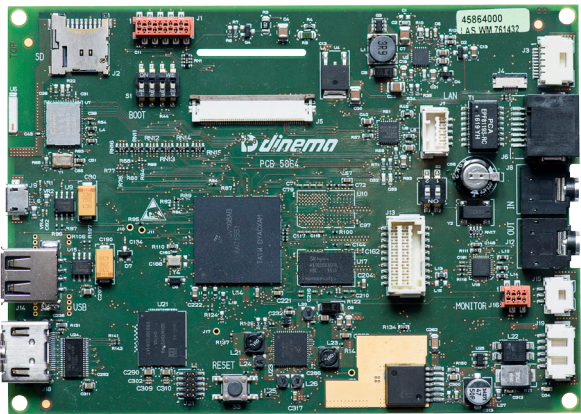
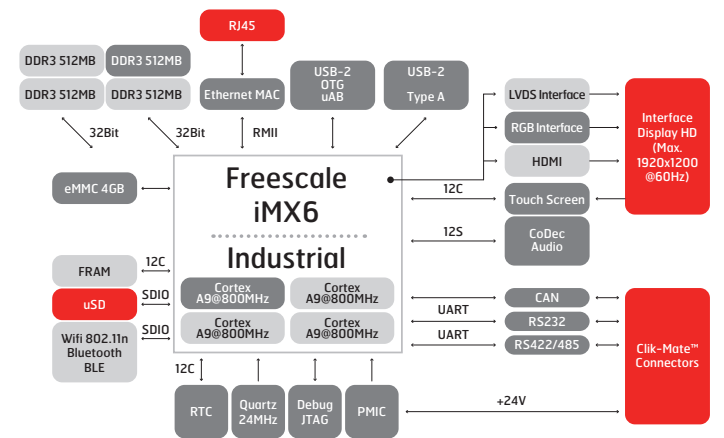
- Default ● Optional ● Connectors

Connectivity and Communication Interface

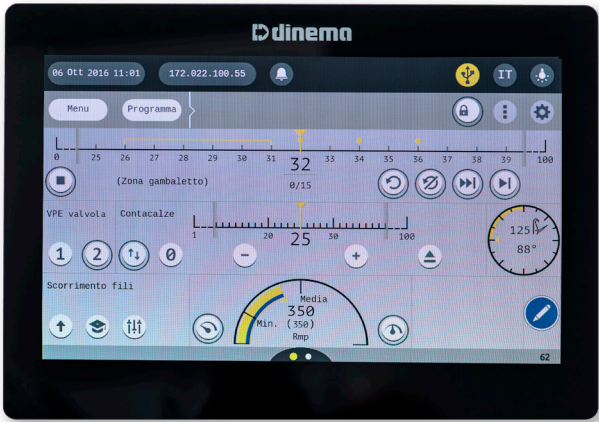
- Wifi 802.11n at 2.4GHZ;
- Bluetooth/BLE;
- Ethernet 10/100Mb;
- OTG uUSB port;
- 2.0 USB port;
- 1Mbit Can-Bus;
- RS232 DEBUG serial console;
- RS422/485 + RS232 ports;
- Digital signals on a I2C and SPI expansion connectors;

HMI

- 7" Dirt Tolerance capacitive touch screen;
- TFT 7", 800x480 e 24bpp;
- HDMI for FullHD remote display, possibility of multi display;
- LVDS for capacitive display up to 21" (FullHD resolution);
- Codec Audio with Jack output stereo;
- Microphone input;

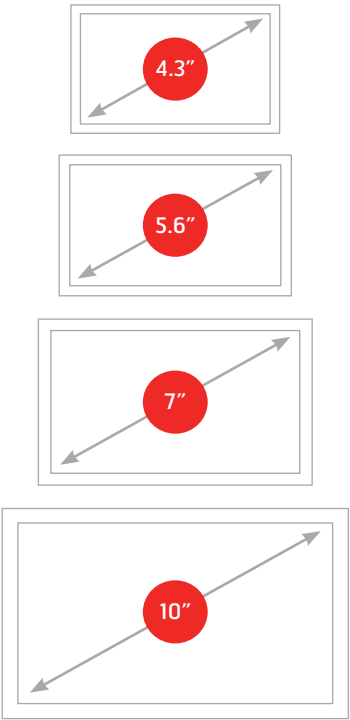


DISPLAY



Display 7” • Dirt Tolerance capacitive touch screen

Available sizes:



DINEMA COMPANY TODAY

Electronic experience made in Italy applies in all sectors, with the design and testing, technical support and service.

For over 40 years **DINEMA** manufactures advanced electronic products and services in many application fields. Characterized by high profile staff, our engineering and industrialization departments are divided in different units for Hardware and Software Development. Among the main logistics services include: research, acquisition and management of electronic components at all levels with agreements with major distributors, supply of printed circuit boards, 9 automatic warehouses with more than 18,000 items managed by domestic production, contractors and external deposits management, integrated materials management and their information flow. The principal activities include: design and production of electronic assemblies, equipment and complete systems, industrialization of electronic products designed by the customer, supply chain management, technical testing cards with both parametric and functional, post-sales technical support, on-site repair and interventions on-field worldwide.

Our quality system is certified according to UNI EN ISO 9001:2008 and is based on the following principles:

1. Customer focus
2. Process approach
3. Continual improvement
4. Leadership
5. Involvement of people
6. Mutually beneficial supplier relationships
7. System approach to managements
8. Factual approach to decision making

Dinema certifications:



DINEMA SPA
Via S.Polo n.183
25124 Brescia (Italy)
Tel. +39 030 2300492
Fax +39 030 2300833



smk@dinema.it - www.dinema.it



MAXIMUS